

ADDENDUM NO. 3

Furnace Bridge - Installation

Essex County, NY

August 3, 2015

TO ALL HOLDERS OF BIDDING DOCUMENTS:

This Addendum, issued to bid document holders of record, indicates clarifications to the bid documents for the Furnace Bridge - Installation project. All clarifications described herein shall be incorporated into the Contractor's bid proposal. This Addendum is part of the Contract Documents. Adjustments required by each item shall be understood to apply to all document references affected by the clarifications described.

1. **Regarding the Drawing Cover Sheet:** The site location indicated on the Location Map is incorrect. DELETE the Cover Sheet attached to Addendum No. 2 and SUBSTITUTE THEREFORE the attached revised Cover Sheet.

END OF ADDENDUM NO. 3
(attachments)

FURNACE BRIDGE OVER BLACK RIVER BRIDGE REPLACEMENT

BIN 3301630

TOWNS OF WESTPORT AND ELIZABETHTOWN N.Y.

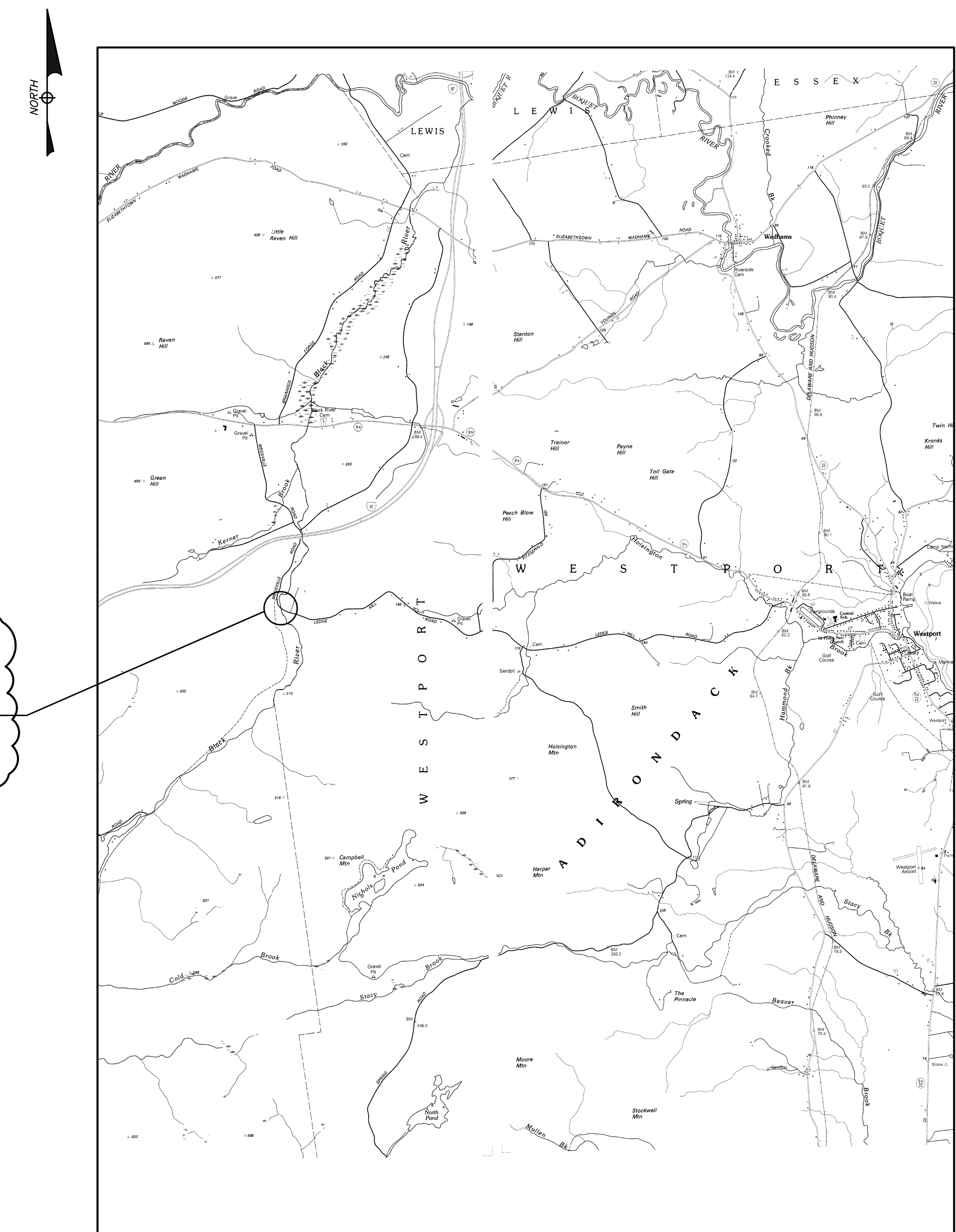
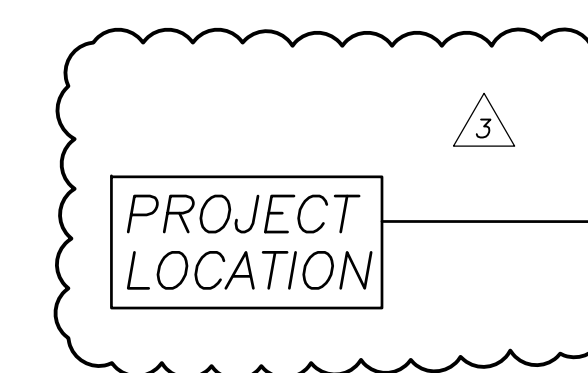
**ESSEX COUNTY DEPARTMENT
OF PUBLIC WORKS**

SR SCHODER RIVERS
ASSOCIATES

Consulting Engineers, P.C.
Evergreen Professional Park
453 Dixon Road, Suite 7, Bldg. 3
Queensbury, New York 12804
(518) 761-0417, FAX: (518) 761-0513

DRAWING INDEX

<u>DWG. NO.</u>	<u>TITLE</u>
	TITLE SHEET
N-1	NOTES
C-1	DEMOLITION & EROSION CONTROL PLAN
C-2	SITE PLAN
C-3	GUIDERAIL PLAN, SECTION & DETAILS
C-4	ROADWAY PROFILE & STREAM CHANNEL PROFILE
C-5	STREAM CHANNEL REGRADING PLAN
S-1	BRIDGE PLAN & SECTION
S-2	FOOTING PLAN & SECTIONS
S-3	WINGWALL ELEVATIONS & DETAILS
S-4	WINGWALL ELEVATIONS & SECTION
S-5	SECTIONS & DETAILS
COE-1	US ARMY CORPS OF ENGINEERS PERMIT DRAWING



LOCATION MAP

N.T.S.



8/3/15

PROJECT LOCATION MAP CORRECTED
PER ADDENDUM NO. 3