

JUNE 12, 2025

Essex County Department of Public Works  
8053 US Route 9  
Elizabethtown, New York 12932

**AMENDMENT NO. 2 TO:**

PROJECT: Hurricane Road (CR 13) over Spruce Hill Brook – Culvert Replacement

CONTRACT NO.: D041663

F.A PROJECT

PIN 1762.98

IN THE LETTING OF  
June 17, 2025 at 2:00 PM

---

**NOTICE TO PROSPECTIVE BIDDERS**

**Project Manual**

1. The Bidder shall REPLACE pages II-14 and II-26 of the Bid form with attached pages.  
The revision in the Bid form include the following:
  - The quantity for Item 555.10000006 Abandon Existing Culvert was changed from 1 CY to 17 CY.
  - Item 565.30130101 Temporary Wood Support was added with a quantity of 28 Each
  - The estimated quantity for items 698.04, 698.05 & 698.06 have been changed to 100.

**Construction Plans**

1. Dwg IA-1 - The following revisions have been made to the Estimate of Quantities:
  - The quantity for Item 555.10000006 Abandon Existing Culvert was changed from 1 CY to 17 CY.
  - Item 565.30130101 Temporary Wood Support was added with a quantity of 28 Each
  - The estimated quantity for items 698.04, 698.05 & 698.06 have been changed to 100.
2. Dwg ST -4 – The following is added to note 1. *"Item 552.13 Steel Sheet Piling with a minimum section modulus of 24.2 in<sup>3</sup>/ft and a 12 ft length of sheet should be assumed"*
3. Dwg ST-7 - The following revisions have been made:
  - Item 565.30130101 Temporary Wood Support was referenced for the wood blocking.
  - Notes have been added to the dwg regarding the wood blocking.



**PLEASE BE GOVERNED ACCORDINGLY WHEN SUBMITTING BIDS.**

PLEASE FILL IN AND SIGN BELOW AND RETURN WITH YOUR PROPOSAL

TO ACKNOWLEDGE RECEIPT OF THIS AMENDMENT

PLEASE CONTACT INESA PENGU WITH H&T ENGINEERING SERVICES, PLLC AT  
(518) 500-2531 WITH ANY QUESTIONS.

\_\_\_\_\_  
Signed

\_\_\_\_\_  
Date

\_\_\_\_\_  
Representing

Thank you for your cooperation in this matter.

Brought Forward \$\_\_\_\_\_.

ITEMIZED BID FORM						
ITEM DESCRIPTION	QTY	UNIT	UNIT PRICE IN WORDS		UNIT PRICE (NUMERALS)	TOTAL (NUMERALS)
201.06	1	LS	_____ Dollars	_____ Cents	\$_____.	\$_____.
203.02	323	CY	_____ Dollars	_____ Cents	\$_____.	\$_____.
203.03	265	CY	_____ Dollars	_____ Cents	\$_____.	\$_____.
203.21	194	CY	_____ Dollars	_____ Cents	\$_____.	\$_____.

Brought Forward \$\_\_\_\_\_.

ITEMIZED BID FORM						
ITEM DESCRIPTION	QTY	UNIT	UNIT PRICE IN WORDS		UNIT PRICE (NUMERALS)	TOTAL (NUMERALS)
203.24010017	SHOULDER BACKUP MATERIAL	21	TON	<div></div> <div></div>	<div>Dollars</div> <div>Cents</div>	<div>\$_____.</div> <div>\$_____.</div>
206.01	STRUCTURE EXCAVATION	992	CY	<div></div> <div></div>	<div>Dollars</div> <div>Cents</div>	<div>\$_____.</div> <div>\$_____.</div>
207.27	PREFABRICATED COMPOSITE INTEGRAL ABUTMENT DRAIN	72	SY	<div></div> <div></div>	<div>Dollars</div> <div>Cents</div>	<div>\$_____.</div> <div>\$_____.</div>
209.13	SILT FENCE-TEMPORARY	242	LF	<div></div> <div></div>	<div>Dollars</div> <div>Cents</div>	<div>\$_____.</div> <div>\$_____.</div>

Brought Forward \$\_\_\_\_\_.

ITEMIZED BID FORM						
ITEM DESCRIPTION	QTY	UNIT	UNIT PRICE IN WORDS		UNIT PRICE (NUMERALS)	TOTAL (NUMERALS)
209.1501	TURBIDITY CURTAIN - TEMPORARY	53	LF	_____ Dollars _____ Cents	\$_____.	\$_____.
304.12	SUBBASE COURSE, TYPE 2	173	CY	_____ Dollars _____ Cents	\$_____.	\$_____.
404.0983	9.5 F3 TOP COURSE ASPHALT, 80 SERIES COMPACTION	46	TON	_____ Dollars _____ Cents	\$_____.	\$_____.
404.1989	19 F9 BINDER COURSE ASPHALT, 80 SERIES COMPACTION	76	TON	_____ Dollars _____ Cents	\$_____.	\$_____.

Brought Forward \$\_\_\_\_\_.

ITEMIZED BID FORM						
ITEM DESCRIPTION	QTY	UNIT	UNIT PRICE IN WORDS		UNIT PRICE (NUMERALS)	TOTAL (NUMERALS)
404.3789	37.5 F9 BASE COURSE ASPHALT, 80 SERIES COMPACTION	92	TON	_____ Dollars _____ Cents	\$_____.	\$_____.
407.0102	DILUTED TACK COAT	67	GAL	_____ Dollars _____ Cents	\$_____.	\$_____.
551.010057	STEEL H-PILES (HP 10X57)	350	LF	_____ Dollars _____ Cents	\$_____.	\$_____.
551.13	FURNISHING EQUIPMENT FOR DRIVING PILES	1	LS	_____ Dollars _____ Cents		

Brought Forward \$\_\_\_\_\_.

ITEMIZED BID FORM						
ITEM DESCRIPTION	QTY	UNIT	UNIT PRICE IN WORDS		UNIT PRICE (NUMERALS)	TOTAL (NUMERALS)
552.13	TEMPORARY STEEL SHEETING	252	SF	_____ Dollars _____ Cents	\$_____.	\$_____.
553.020001	COFFERDAMS (TYPE 2)	1	EACH	_____ Dollars _____ Cents	\$_____.	\$_____.
553.020002	COFFERDAMS (TYPE 2)	1	EACH	_____ Dollars _____ Cents	\$_____.	\$_____.
555.10000006	ABANDON EXISTING CULVERT	17	CY	_____ Dollars _____ Cents	\$_____.	\$_____.

Brought Forward \$\_\_\_\_\_.

ITEMIZED BID FORM						
ITEM DESCRIPTION	QTY	UNIT	UNIT PRICE IN WORDS		UNIT PRICE (NUMERALS)	TOTAL (NUMERALS)
555.0021	CONCRETE FOR STRUCTURES, PERFORMANCE	68	CY	_____ Dollars _____ Cents	\$_____.	\$_____.
556.0201	UNCOATED BAR REINFORCEMENT FOR CONCRETE STRUCTURES	2883	LB	_____ Dollars _____ Cents	\$_____.	\$_____.
556.0202	EPOXY-COATED BAR REINFORCEMENT FOR STRUCTURES	2753	LB	_____ Dollars _____ Cents	\$_____.	\$_____.
557.1011	STRUCTURAL APPROACH SLAB WITH INTEGRAL WEARING SURFACE, TYPE 1 FRICTION	66	SY	_____ Dollars _____ Cents	\$_____.	\$_____.



Brought Forward \$\_\_\_\_\_.

ITEMIZED BID FORM						
ITEM DESCRIPTION	QTY	UNIT	UNIT PRICE IN WORDS		UNIT PRICE (NUMERALS)	TOTAL (NUMERALS)
557.1211	134	SY	_____	Dollars	\$_____.	\$_____.
			_____	Cents		
557.29	199	SY	_____	Dollars	\$_____.	\$_____.
			_____	Cents		
558.02	182	SY	_____	Dollars	\$_____.	\$_____.
			_____	Cents		
559.01	1285	SF	_____	Dollars	\$_____.	\$_____.
			_____	Cents		

Brought Forward \$\_\_\_\_\_.

ITEMIZED BID FORM						
ITEM DESCRIPTION	QTY	UNIT	UNIT PRICE IN WORDS		UNIT PRICE (NUMERALS)	TOTAL (NUMERALS)
559.02	618	SF	_____	Dollars	\$_____.	\$_____.
			_____	Cents		
563.03	1102	SF	_____	Dollars	\$_____.	\$_____.
			_____	Cents		
565.30130101	28	EACH	_____	Dollars	\$_____.	\$_____.
			_____	Cents		
568.51	94	LF	_____	Dollars	\$_____.	\$_____.
			_____	Cents		

Brought Forward \$\_\_\_\_\_.

ITEMIZED BID FORM						
ITEM DESCRIPTION		QTY	UNIT	UNIT PRICE IN WORDS		TOTAL (NUMERALS)
568.70	TRANSITION BRIDGE RAILING	128	LF	_____ Dollars	\$_____.	\$_____.
				_____ Cents		
606.10	BOX BEAM GUIDE RAILING	135	LF	_____ Dollars	\$_____.	\$_____.
				_____ Cents		
606.120201	BOX BEAM GUIDE RAILING END ASSEMBLY, TYPE IIA	4	EACH	_____ Dollars	\$_____.	\$_____.
				_____ Cents		
610.1605	TURF ESTABLISHMENT PERFORMANCE	222	SY	_____ Dollars	\$_____.	\$_____.
				_____ Cents		

Brought Forward \$\_\_\_\_\_.

ITEMIZED BID FORM						
ITEM DESCRIPTION	QTY	UNIT	UNIT PRICE IN WORDS		UNIT PRICE (NUMERALS)	TOTAL (NUMERALS)
619.01	1	LS	_____	Dollars	\$_____.	\$_____.
			_____	Cents		
620.05	189	CY	_____	Dollars	\$_____.	\$_____.
			_____	Cents		
620.0801	59	CY	_____	Dollars	\$_____.	\$_____.
			_____	Cents		
620.29010009	40	CY	_____	Dollars	\$_____.	\$_____.
			_____	Cents		

Brought Forward \$\_\_\_\_\_.

ITEMIZED BID FORM						
ITEM DESCRIPTION		QTY	UNIT	UNIT PRICE IN WORDS		TOTAL (NUMERALS)
625.01	SURVEY OPERATIONS	1	LS	_____ Dollars	\$_____.	\$_____.
				_____ Cents		
646.22	DELINEATOR, SNOWPLOWING MARKER, SUPPLEMENTARY SNOWPLOWING MARKER PANELS	6	EACH	_____ Dollars	\$_____.	\$_____.
				_____ Cents		
646.32	STEEL POST, 2.0 LB/FT	4	EACH	_____ Dollars	\$_____.	\$_____.
				_____ Cents		
685.0101	WHITE EPOXY REFLECTORIZED PAVEMENT STRIPES - 15 MILS	450	LF	_____ Dollars	\$_____.	\$_____.
				_____ Cents		

Brought Forward \$\_\_\_\_\_.

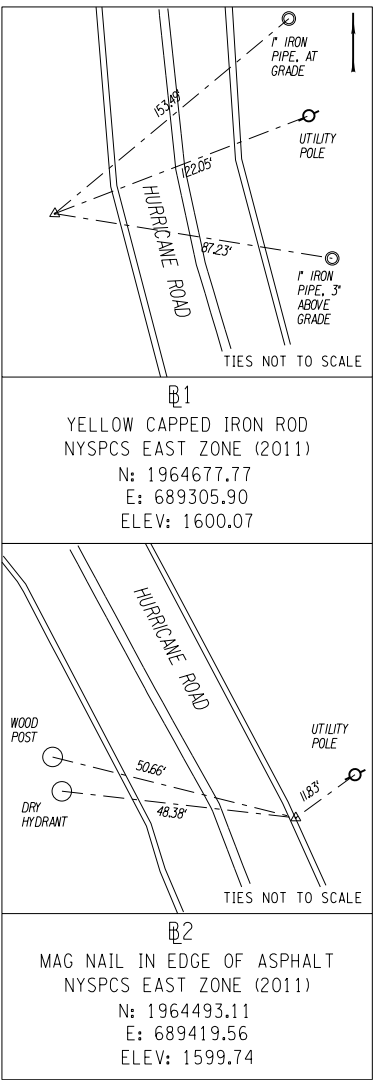
ITEMIZED BID FORM						
ITEM DESCRIPTION	QTY	UNIT	UNIT PRICE IN WORDS		UNIT PRICE (NUMERALS)	TOTAL (NUMERALS)
685.0201	YELLOW EPOXY REFLECTORIZED PAVEMENT STRIPES-15 MILS	450	LF	_____ Dollars _____ Cents	\$_____.	\$_____.
697.03	FIELD CHANGE PAYMENT	42450	DC	<u>FIXED PRICE SPECIFICATION</u> Dollars Cents	\$_____ 1.00	\$_____ 42,450.0
698.04	ASPHALT PRICE ADJUSTMENT	100	DC	<u>FIXED PRICE SPECIFICATION</u> Dollars Cents	\$_____.	\$_____.
698.05	FUEL PRICE ADJUSTMENT	100	DC	<u>FIXED PRICE SPECIFICATION</u> Dollars Cents	\$_____.	\$_____.

Brought Forward \$\_\_\_\_\_.

ITEMIZED BID FORM						
ITEM DESCRIPTION	QTY	UNIT	UNIT PRICE IN WORDS		UNIT PRICE (NUMERALS)	TOTAL (NUMERALS)
698.06	STEEL/IRON PRICE ADJUSTMENT	100	DC	<u>FIXED PRICE SPECIFICATION</u>	Dollars Cents	\$_____. \$_____.
PIN 1762.98 Subtotal				_____ _____	Dollars Cents	\$_____. \$_____.
699.040001	MOBILIZATION (4% MAXIMUM)	LS	1.00	_____ _____	Dollars Cents	\$_____. \$_____.
PIN 1762.98 Total				_____ _____	Dollars Cents	\$_____. \$_____.

HURRICANE ROAD (CR13) PLAN INDEX		
SHEET NO.	DESCRIPTION	DRAWING NO.
1	COVER	COV
2	INDEX AND ESTIMATE	IA-1
3	LEGEND POINT SYMBOLOGY	LE-1
4	LEGEND LINE SYMBOLOGY	LE-2
5	GENERAL NOTES	GN-1
6	GENERAL PLAN AND ELEVATION	ST-1
7	TYPICAL SECTIONS	ST-2
8	PROFILE	ST-3
9	EARTHWORK AND EROSION CONTROL PLAN	ST-4
10	EARTHWORK SECTIONS	ST-5
11	ABUTMENT PILE PLAN	ST-6
12	BEGIN ABUTMENT PLAN AND ELEVATION	ST-7
13	BEGIN ABUTMENT REINFORCEMENT PLAN	ST-8
14	END ABUTMENT PLAN AND ELEVATION	ST-9
15	END ABUTMENT REINFORCEMENT PLAN	ST-10
16	BRIDGE TRANSVERSE SECTION	ST-11
17	FRAMING PLAN	ST-12
18	PRECAST BEAM PLAN AND REINFORCEMENT DETAILS	ST-13
19	PRECAST BEAM DETAILS	ST-14
20	CAMBER AND DESIGN LOAD TABLES	ST-15
21	SUPERSTRUCTURE SLAB REINFORCEMENT PLAN	ST-16
22	APPROACH SLAB PLAN AND DETAILS	ST-17
23	RAILING PLAN	ST-18
24	BRIDGE RAIL DETAILS	ST-19
25	TRANSITION RAIL PLAN, ELEVATION AND DETAILS	ST-20
26	TRANSITION RAIL DETAILS	ST-21

TABLE OF HORIZONTAL ALIGNMENT				
POINT	STATION	CURVE DATA	COORDINATE	
			NORTH	EAST
POB	H 1+00.00	RADIUS = 165.0 FT DELTA = 42°24'21.2" LENGTH = 125.0 FT TANGENT = 65.67 FT	1964735.60	689331.23
PI	H 1+62.52		1964672.29	689312.41
PT	H 2+25.00	AZ 152°56'06.8" LENGTH = 148.0 FT	1964614.00	689342.19
PC	H 3+73.00	RADIUS = 130.0 FT DELTA = 44°04'25.2" LENGTH = 100.0 FT TANGENT = 52.62 FT	1964482.01	689409.63
PI	H 4+23.00		1964435.15	689433.57
POE	H 4+73.00		1964384.84	689418.18



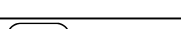
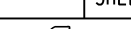
BASELINE TIES

HURRICANE ROAD (CR13) PLAN ESTIMATE OF QUANTITIES				
ITEM NO.	DESCRIPTION	UNIT	ESTIMATED QUANTITY	FINAL QUANTITY
201.06	CLEARING AND GRUBBING	LS	1	
203.02	UNCLASSIFIED EXCAVATION AND DISPOSAL	CY	323	
203.03	EMBANKMENT IN PLACE	CY	265	
203.21	SELECT STRUCTURE FILL	CY	194	
203.24010017	SHOULDER BACKUP MATERIAL	TON	21	
206.01	STRUCTURE EXCAVATION	CY	992	
207.27	PREFABRICATED COMPOSITE INTEGRAL ABUTMENT DRAIN	SY	72	
209.13	SILT FENCE-TEMPORARY	LF	242	
209.1501	TURBIDITY CURTAIN - TEMPORARY	LF	53	
304.12	SUBBASE COURSE, TYPE 2	CY	173	
404.0983	9.5 F3 TOP COURSE ASPHALT, 80 SERIES COMPACTION	TON	46	
404.1989	19 F9 BINDER COURSE ASPHALT, 80 SERIES COMPACTION	TON	76	
404.3789	37.5 F9 BASE COURSE ASPHALT, 80 SERIES COMPACTION	TON	92	
407.0102	DILUTED TACK COAT	GAL	67	
551.010057	STEEL H-PILES (HP 10X57)	LF	350	
551.13	FURNISHING EQUIPMENT FOR DRIVING PILES	LS	1	
552.13	TEMPORARY STEEL SHEETING	SF	252	
553.020001	COFFERDAMS (TYPE 2)	EACH	1	
553.020002	COFFERDAMS (TYPE 2)	EACH	1	
555.10000006	ABANDON EXISTING CULVERT	CY	17	
555.0021	CONCRETE FOR STRUCTURES, PERFORMANCE	CY	68	
556.0201	UNCOATED BAR REINFORCEMENT FOR CONCRETE STRUCTURES	LB	2883	
556.0202	EPOXY-COATED BAR REINFORCEMENT FOR STRUCTURES	LB	2753	
557.1011	STRUCTURAL APPROACH SLAB WITH INTEGRAL WEARING SURFACE, TYPE 1 FRICTION	SY	66	
557.1211	SUPERSTRUCTURE SLAB WITH INTEGRAL WEARING SURFACE BOTTOM FORMWORK NOT REQUIRED - TYPE 1 FRICTION	SY	134	
557.29	WINTER SURFACE TREATMENT - SUPERSTRUCTURE SLABS AND STRUCTURAL APPROACH SLABS	SY	199	
558.02	LONGITUDINAL SAWCUT GROOVING OF STRUCTURAL SLAB SURFACE	SY	182	
559.01	PROTECTIVE SEALING OF STRUCTURAL CONCRETE ON NEW BRIDGE, DECKS AND BRIDGE DECK OVERLAYS	SF	1285	
559.02	PROTECTIVE SEALING OF NEW STRUCTURAL CONCRETE	SF	618	
563.03***	PRESTRESSED CONCRETE HOLLOW SLAB UNITS	SF	1102	
565.30130101	TEMPORARY WOOD SUPPORT	EACH	28	
568.51	STEEL BRIDGE RAILING (FOUR RAIL)	LF	94	
568.70	TRANSITION BRIDGE RAILING	LF	128	
606.10	BOX BEAM GUIDE RAILING	LF	135	
606.120201	BOX BEAM GUIDE RAILING END ASSEMBLY, TYPE IIA	EACH	4	
610.1605	TURF ESTABLISHMENT PERFORMANCE	SY	222	
619.01	BASIC WORK ZONE TRAFFIC CONTROL	LS	1	
620.05	STONE FILLING (HEAVY)	CY	189	
620.0801	BEDDING MATERIAL, TYPE 1	CY	59	
620.29010009	NATIVE STREAM BED MATERIAL (A)	CY	40	
625.01	SURVEY OPERATIONS	LS	1	
646.22	DELINEATOR, SNOWPLOWING MARKER, SUPPLEMENTARYSNOWPLOWING MARKER PANELS	EACH	6	
646.32	STEEL POST, 2.0 LB/FT	EACH	4	
685.0101	WHITE EPOXY REFLECTORIZED PAVEMENT STRIPES - 15 MILS	LF	450	
685.0201	YELLOW EPOXY REFLECTORIZED PAVEMENT STRIPES-15 MILS	LF	450	
697.03	FIELD CHANGE PAYMENT	DC	42450	
698.04	ASPHALT PRICE ADJUSTMENT	DC	100	
698.05	FUEL PRICE ADJUSTMENT	DC	100	
698.06	STEEL/IRON PRICE ADJUSTMENT	DC	100	
699.040001	MOBILIZATION	LS	1	

\*\*\* ADVANCE PROCUREMENT ITEMS:

THE MATERIALS FOR THE FOLLOWING ITEMS HAVE BEEN PURCHASED IN ADVANCE BY THE ESSEX COUNTY DEPARTMENT OF PUBLIC WORKS. MATERIALS WILL BE DELIVERED TO THE JOBSITE BY THE FABRICATOR AT NO COST TO THE CONTRACTOR. CONTRACTOR IS RESPONSIBLE FOR COORDINATING THE DELIVERY AND ALL WORK ASSOCIATED WITH THE INSTALLATION OF THESE ITEMS. THE UNIT PRICE FOR THIS ITEM SHALL INCLUDE ALL WORK ASSOCIATED WITH THE ITEM EXCEPT FOR FURNISHING OF MATERIAL.

- ITEM 563.03 PRESTRESSED CONCRETE HOLLOW SLAB UNITS

AS-BUILT REVISIONS DESCRIPTION OF ALTERATIONS:	HURRICANE ROAD OVER SPRUCE HILL BROOK	PIN 1762.98	BRIDGES BIN 3372130	CULVERTS	ALL DIMENSIONS IN ft UNLESS OTHERWISE NOTED	CONTRACT NUMBER
	CULVERT REPLACEMENT PROJECT					D041663
					INDEX AND ESTIMATE	DRAWING NO. IA-1
	TOWN OF KEENE					SHEET NO. 2
	COUNTY: ESSEX REGION: 1					
IT IS A VIOLATION OF LAW FOR ANY PERSON, UNLESS THEY ARE ACTING UNDER THE DIRECTION OF A LICENSED PROFESSIONAL ENGINEER, ARCHITECT, LANDSCAPE ARCHITECT, OR LAND SURVEYOR, TO ALTER AN ITEM IN ANY WAY. IF AN ITEM BEARING THE STAMP OF A LICENSED PROFESSIONAL IS ALTERED, THE ALTERING ENGINEER, ARCHITECT, LANDSCAPE ARCHITECT, OR LAND SURVEYOR SHALL STAMP THE DOCUMENT AND INCLUDE THE NOTATION "ALTERED BY" FOLLOWED BY THEIR SIGNATURE, THE DATE OF SUCH ALTERATION, AND A SPECIFIC DESCRIPTION OF THE ALTERATION.						 <b>Department of Transportation</b>



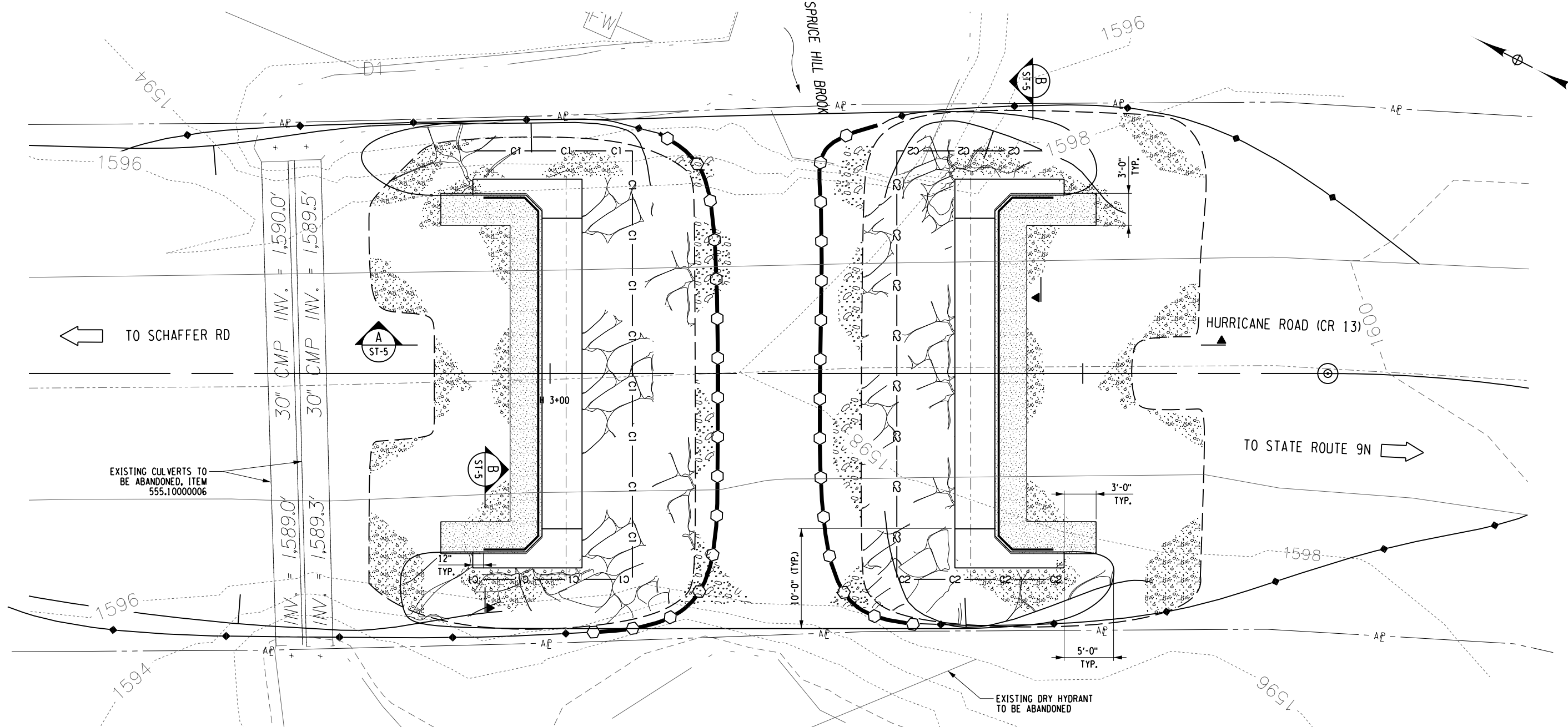
PROJECT MANAGER C. TUTUNJIAN

CHECKED BY I. PENGU

DRAFTED BY I. MAHSERJIAN

CHECKED BY I. PENGU

DESIGNED BY I. MAHSERJIAN



EARTHWORK AND EROSION CONTROL PLAN

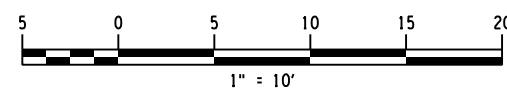
LEGEND:

- NATIVE STREAMBED MATERIAL, ITEM 620.29010009
- HEAVY STONE FILLING, ITEM 620.05
- EMBANKMENT IN PLACE, ITEM 203.03
- SELECT STRUCTURE FILL, ITEM 203.21
- LIMITS OF STRUCTURE EXCAVATION, ITEM 206.01

- PREFABRICATED COMPOSITE INTEGRAL ABUTMENT DRAIN, ITEM 207.27
- SILT FENCE, ITEM 209.13
- TURBIDITY CURTAIN, ITEM 209.1501
- CX - TYPE 2 COFFERDAM, ITEMS 553.020001 & 553.020002
- CUT LINE (FINAL CONDITION)
- FILL LINE (FINAL CONDITION)

NOTES:

- STRUCTURE EXCAVATION PROTECTION SYSTEMS SHALL BE USED IF THE EXCAVATION LIMITS EXTEND BEYOND THE HIGHWAY BOUNDARY. ITEM 552.13 STEEL SHEET PILING WITH A MINIMUM SECTION MODULUS OF 24.2 IN<sup>2</sup>/FT AND A 12 FT LENGTH OF SHEET SHOULD BE ASSUMED.
- SHOULD THE CONTRACTOR ELECT TO LAY BACK A PORTION OF THE EXISTING EARTH ADJACENT TO AN EXCAVATION REQUIRING A COFFERDAM, ANY REQUIREMENT EXTENSIONS TO THE COFFERDAM NECESSARY TO KEEP WATER FROM ENTERING THE EXCAVATION SHALL BE FURNISHED AND PLACED AT NO COST TO THE COUNTY.





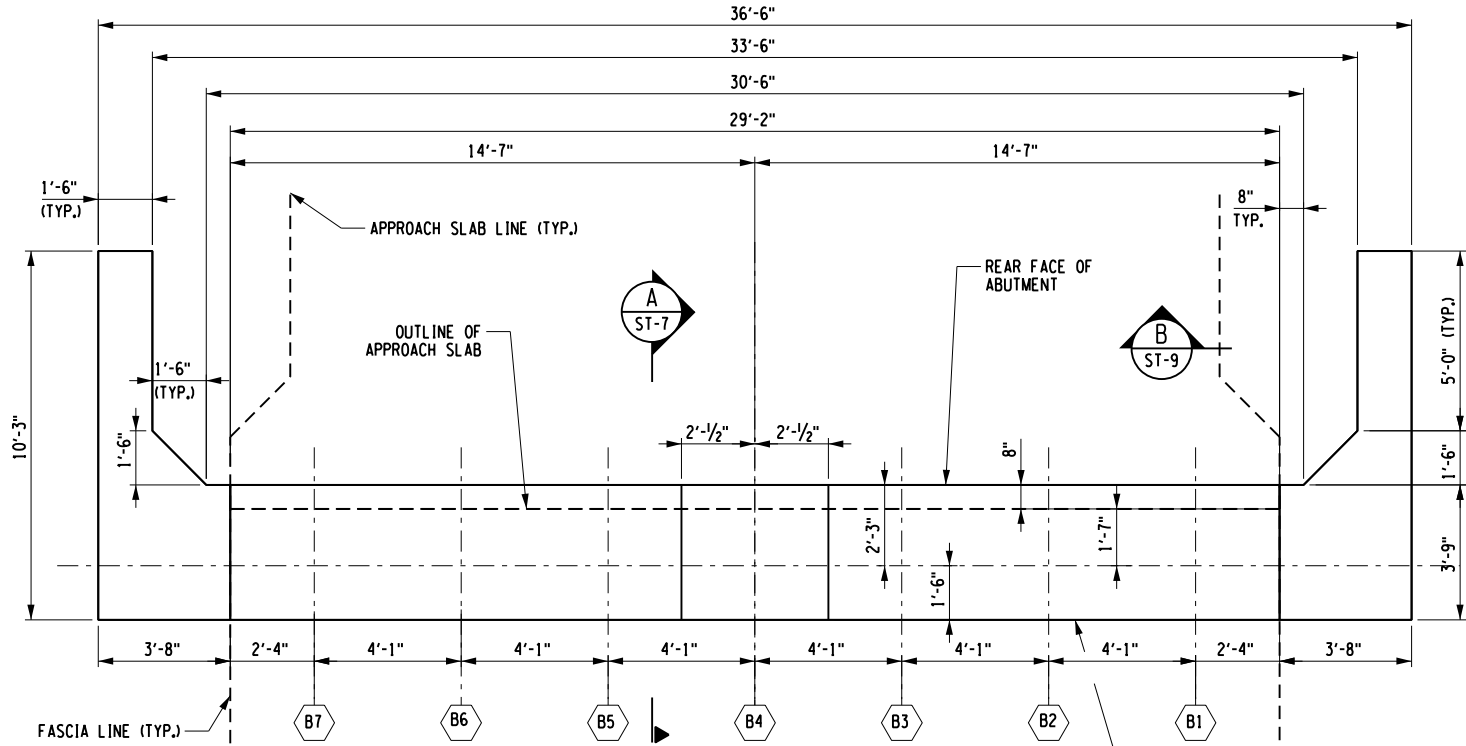
PREPARED BY: CHARLES TUTUNJIAN, P.E.  
ON: 06/11/2025

ALTERED BY:  
ON:

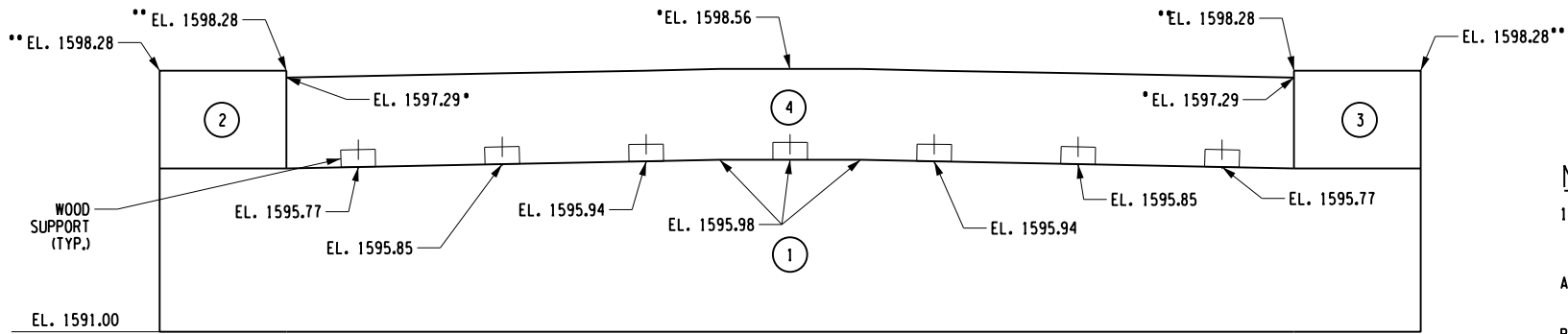


AS-BUILT REVISIONS DESCRIPTION OF ALTERATIONS:	HURRICANE ROAD OVER SPRUCE HILL BROOK	PIN 1762.98	BRIDGES BIN 3372130	CULVERTS	ALL DIMENSIONS IN ft UNLESS OTHERWISE NOTED	CONTRACT NUMBER D041663
	CULVERT REPLACEMENT PROJECT				EARTHWORK AND EROSION CONTROL PLAN	DRAWING NO. ST-4 SHEET NO. 9
	TOWN OF KEENE					
	COUNTY: ESSEX REGION: 1					

IT IS A VIOLATION OF LAW FOR ANY PERSON, UNLESS THEY ARE ACTING UNDER THE DIRECTION OF A LICENSED PROFESSIONAL ENGINEER, ARCHITECT, LANDSCAPE ARCHITECT, OR LAND SURVEYOR, TO ALTER AN ITEM IN ANY WAY. IF AN ITEM BEARING THE STAMP OF A LICENSED PROFESSIONAL IS ALTERED, THE ALTERING ENGINEER, ARCHITECT, LANDSCAPE ARCHITECT, OR LAND SURVEYOR SHALL STAMP THE DOCUMENT AND INCLUDE THE NOTATION "ALTERED BY" FOLLOWED BY THEIR SIGNATURE, THE DATE OF SUCH ALTERATION, AND A SPECIFIC DESCRIPTION OF THE ALTERATION.				Department of Transportation
--	--	---	---	---------------------------------



CONCRETE TABLE		
PLACEMENT	QUANTITY	ITEM NO.
1	29.0 CY	555.0021
2	2.6 CY	555.0021
3	2.6 CY	555.0021
4	4.3 CY	555.0021

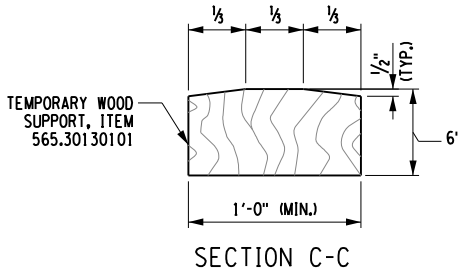
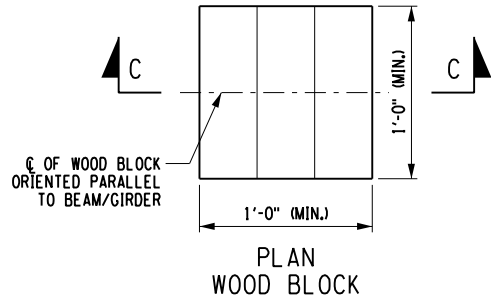


BEGIN ABUTMENT ELEVATION  
SCALE: 3/16" = 1'-0"

\* ELEVATION AT FRONT FACE OF BACKWALL.  
\*\* ELEVATION AT FRONT FACE OF ABUTMENT.

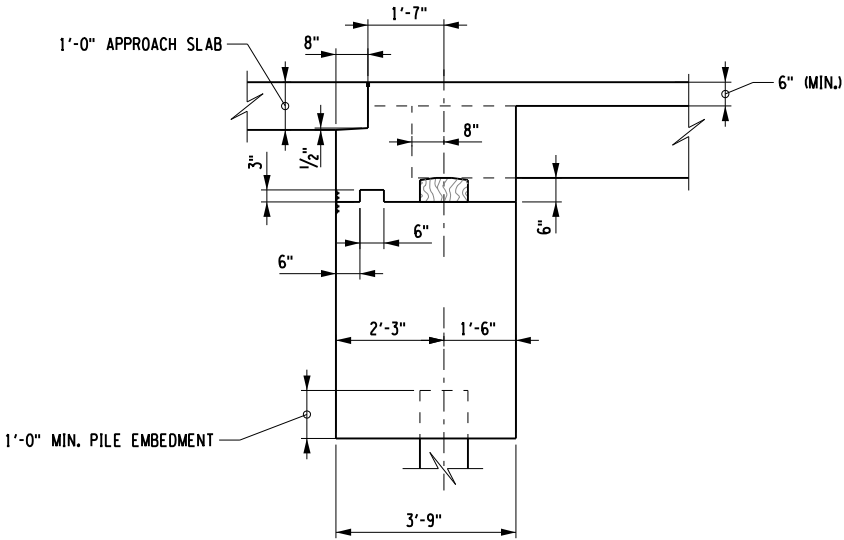
LEGEND:

- (X) INDICATES CONCRETE PLACEMENT NUMBER
- (BX) INDICATES BEAM NUMBER



WOOD SUPPORT NOTES:

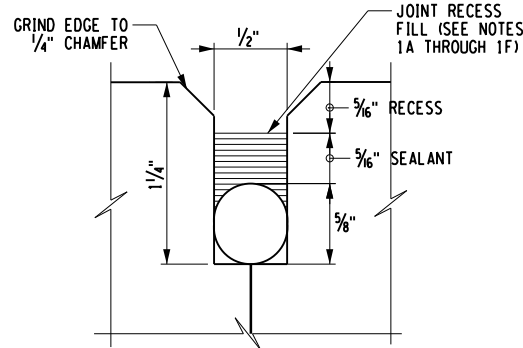
- THE WOOD SUPPORT SHALL BE ORIENTED WITH THE GRAIN VERTICAL. THE WOOD SUPPORT SHALL CONFORM TO, AND BE PAID UNDER, ITEM 565.30130101, "TEMPORARY WOOD SUPPORT".
- IF NECESSARY, STEEL FILL PLATES (MIN. 1/4" THICK EA.) OF UP TO 1" TOTAL HEIGHT, MAY BE USED BETWEEN THE WOOD BLOCK AND ABUTMENT STEM. COST OF FILL PLATES SHALL BE INCLUDED IN THE UNIT PRICE BID FOR THE ABUTMENT CONCRETE.



TYPICAL ABUTMENT SECTION  
SCALE: 1" = 4'-0"

NOTES:

- JOINT RECESS FILL MATERIALS SHALL BE INCLUDED IN THE UNIT PRICE BID FOR THE APPROACH SLAB ITEM AND SHALL MEET MATERIAL REQUIREMENTS GIVEN IN THE PROCEDURE AS FOLLOWS:
  - FILL THE RECESS WITH A STRUCTURAL JOINT MATERIAL, SILICONE SEALANT, FROM THE DEPARTMENT'S APPROVED LIST FOR ITEM 567.51-16.
  - IF THE RECESS IS SAW CUT, WATER BLAST IMMEDIATELY FOLLOWING CUTTING TO REMOVE ANY RESIDUAL SLURRY BEFORE IT DRIES.
  - CLEAN THE VERTICAL FACES OF THE RECESS BY ABRASIVE BLAST, AND AIR BLOW THE RESIDUE FROM THE RECESS.
  - PRIME THE VERTICAL FACES WITH THE MANUFACTURER'S RECOMMENDED PRIMER, AND ALLOW TO DRY.
  - PLACE A 3/8" DIA. SOFT CLOSED CELL BACKER ROD IN THE BOTTOM OF THE RECESS.
  - POUR THE SILICONE SEALANT TO A DEPTH OF APPROX. 3/16".



JOINT RECESS DETAIL  
(NOT TO SCALE)



PREPARED BY: CHARLES TUTUNJIAN, P.E.  
ON: 06/11/2025

ALTERED BY:  
ON:

AS-BUILT REVISIONS  
DESCRIPTION OF ALTERATIONS:

HURRICANE ROAD OVER SPRUCE HILL BROOK	PIN 1762.98
CULVERT REPLACEMENT PROJECT	BRIDGES BIN 3372130
TOWN OF KEENE	CULVERTS
COUNTY: ESSEX	REGION: 1

ALL DIMENSIONS IN ft UNLESS OTHERWISE NOTED

BEGIN ABUTMENT  
PLAN AND ELEVATION

CONTRACT NUMBER  
D041663

DRAWING NO. ST-7  
SHEET NO. 12

IT IS A VIOLATION OF LAW FOR ANY PERSON, UNLESS THEY ARE ACTING UNDER THE DIRECTION OF A LICENSED PROFESSIONAL ENGINEER, ARCHITECT, LANDSCAPE ARCHITECT, OR LAND SURVEYOR, TO ALTER AN ITEM IN ANY WAY. IF AN ITEM BEARING THE STAMP OF A LICENSED PROFESSIONAL IS ALTERED, THE ALTERING ENGINEER, ARCHITECT, LANDSCAPE ARCHITECT, OR LAND SURVEYOR SHALL STAMP THE DOCUMENT AND INCLUDE THE NOTATION "ALTERED BY" FOLLOWED BY THEIR SIGNATURE, THE DATE OF SUCH ALTERATION, AND A SPECIFIC DESCRIPTION OF THE ALTERATION.



Department of  
Transportation